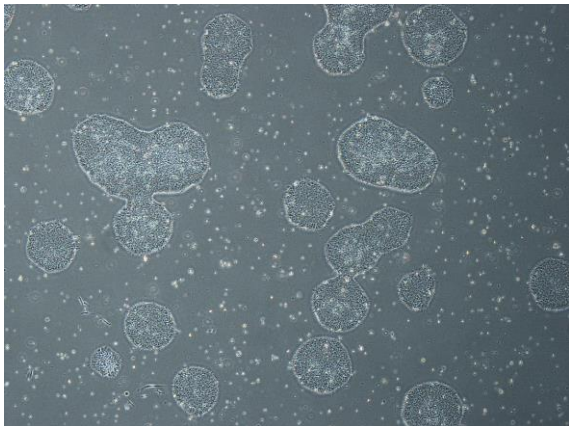
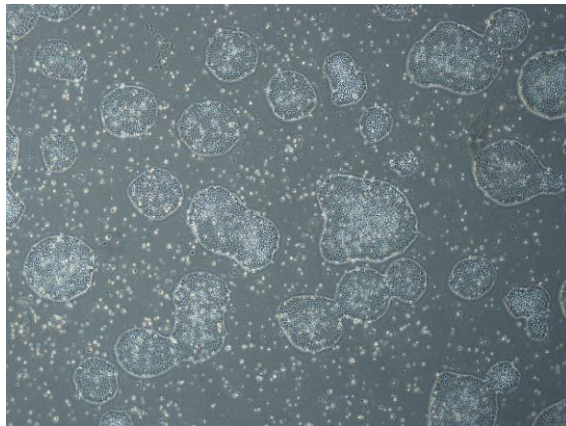


【 CiRA-j-1354 】 Morphology of iPSC colonies

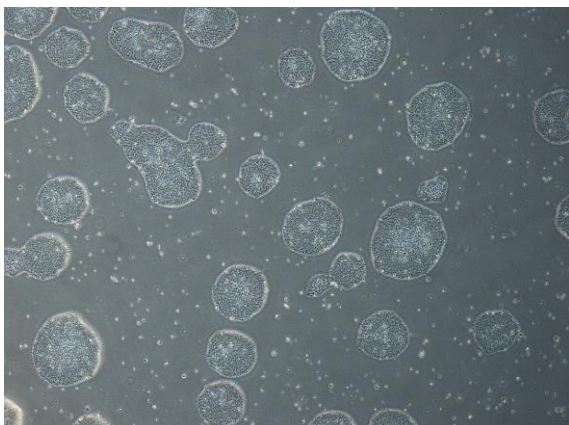
CiRA-j-1354-A: passage-3



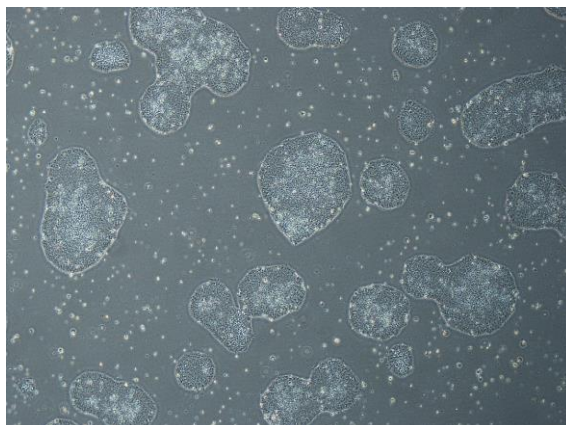
CiRA-j-1354-B: passage-3



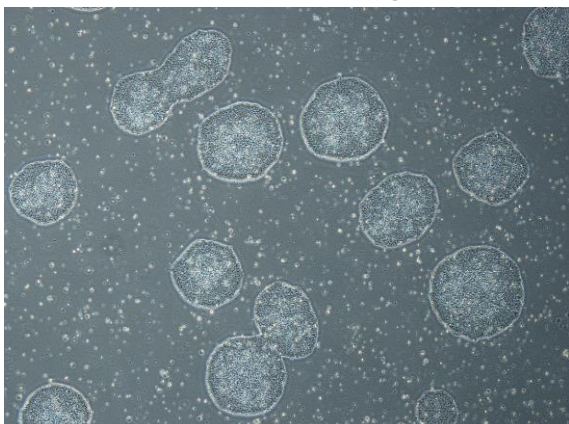
CiRA-j-1354-C: passage-3



CiRA-j-1354-D: passage-3



CiRA-j-1354-E: passage-3



CiRA-j-1354-F: passage-3



(All images were captured at 4x magnification)